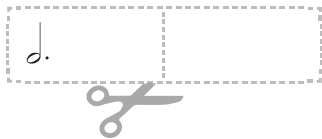


Dotted Half Notes

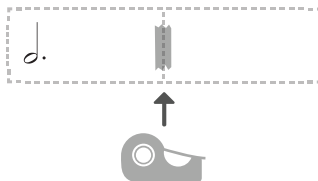
Card dimensions: 6 3/8 in. x 3 1/4 in.



1.

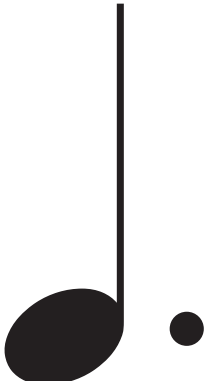
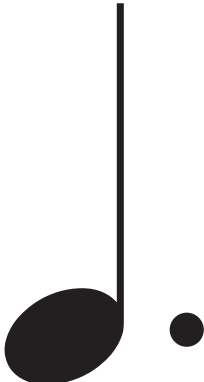


2.



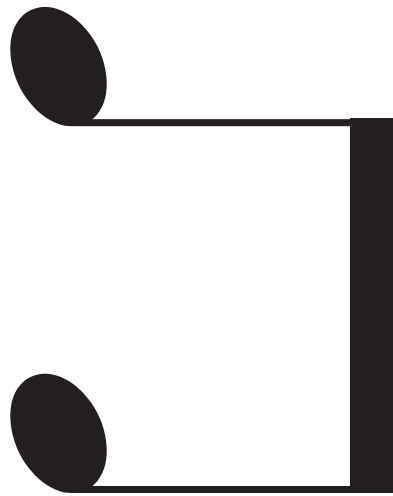
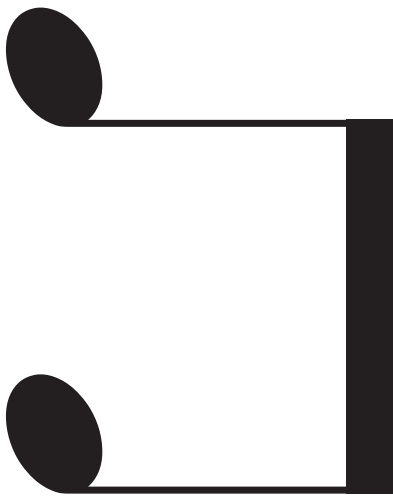
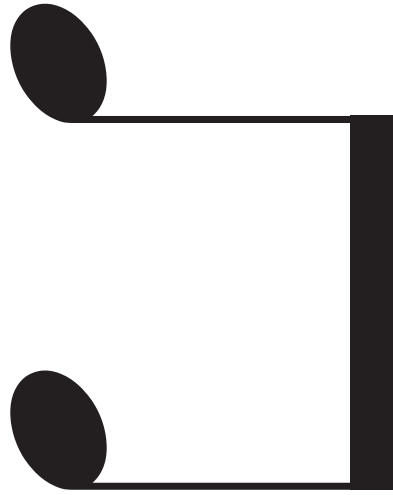
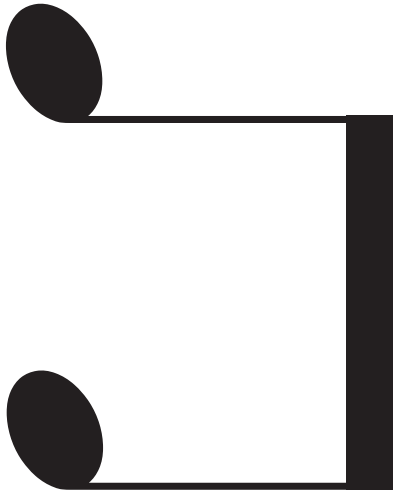
Dotted Quarter Notes

Card dimensions: 6 3/8 in. x 3 1/4 in.



Eighth Notes

Card dimensions: 4.25 in. x 3.25in



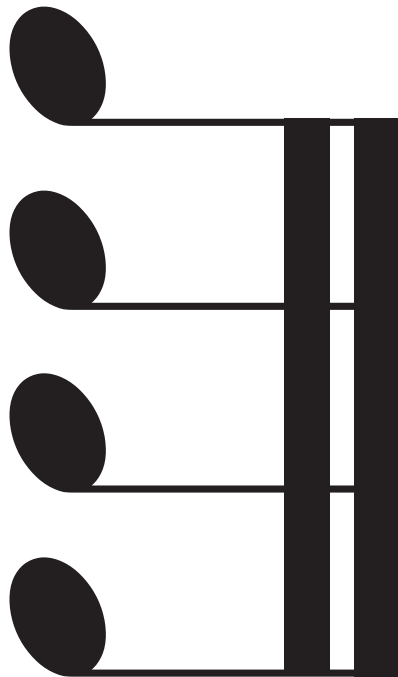
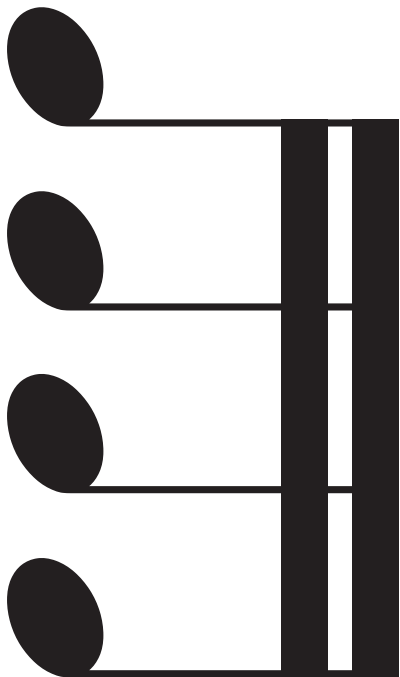
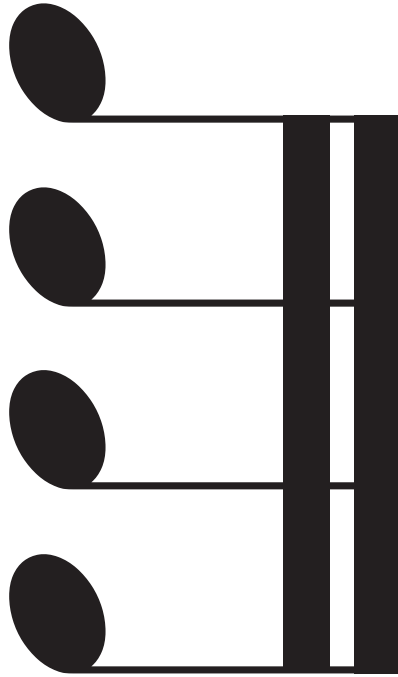
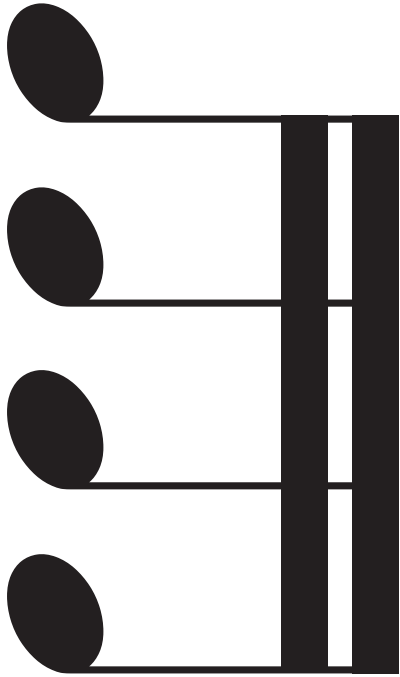
Eighth Notes with Flags

Card dimensions: 2 1/8 in. x 3 1/4 in.



Four Sixteenth Notes

Card dimensions: 4.25 in. x 3.25 in



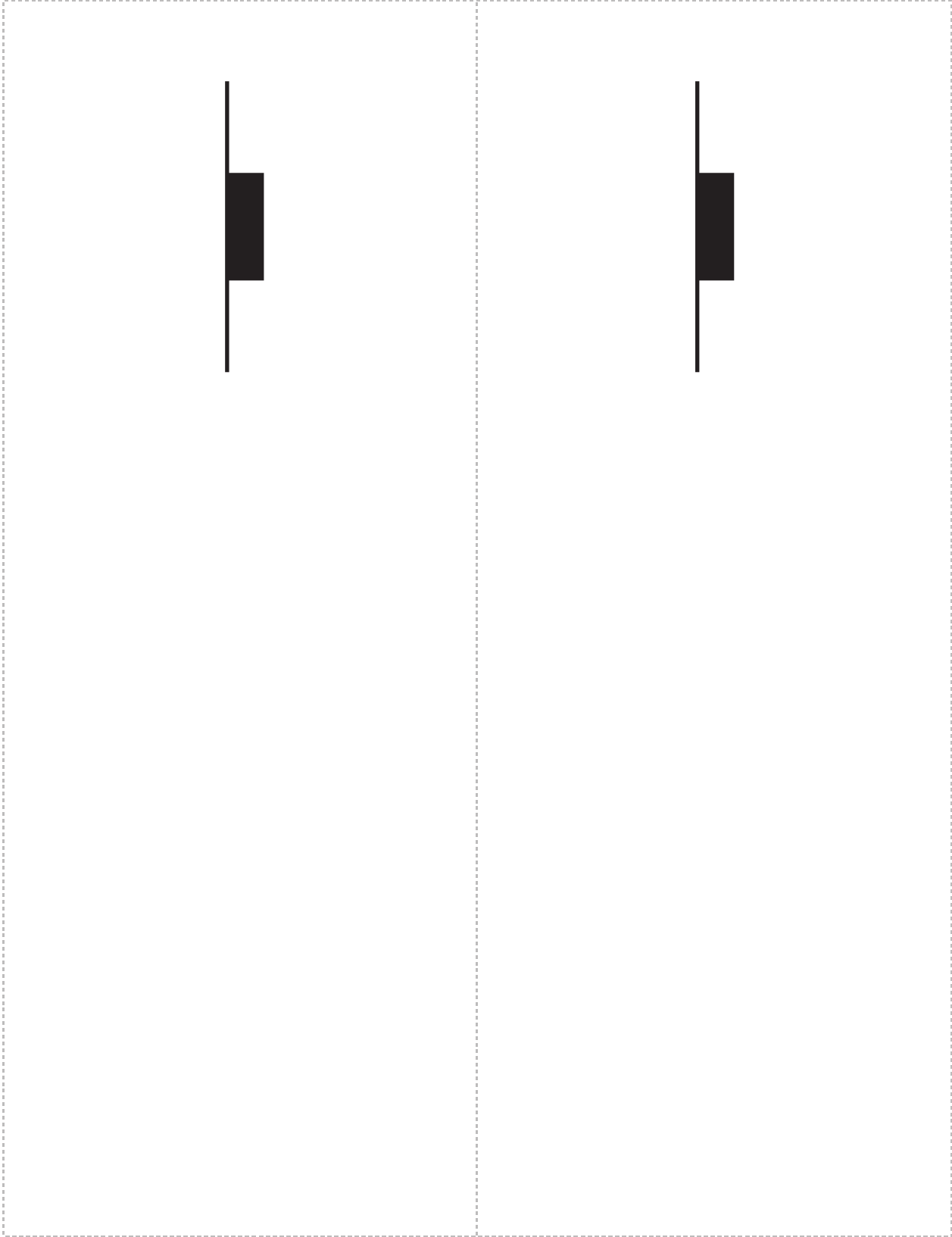
Half Notes

Card dimensions: 8.5 in. x 3.25 in.



Half Rest

Card dimensions: 8.5 in. x 3.25 in.



The image shows two identical blank rectangular boxes arranged side-by-side. Each box is defined by a dashed border. On the left side of each box, there is a vertical line extending from the top to the bottom. A solid black rectangular marker is positioned on the left side of the box, overlapping the vertical line. The boxes are intended for writing the name of the instrument.



Quarter Notes

Card dimensions: 4.25 in. x 3.25 in.



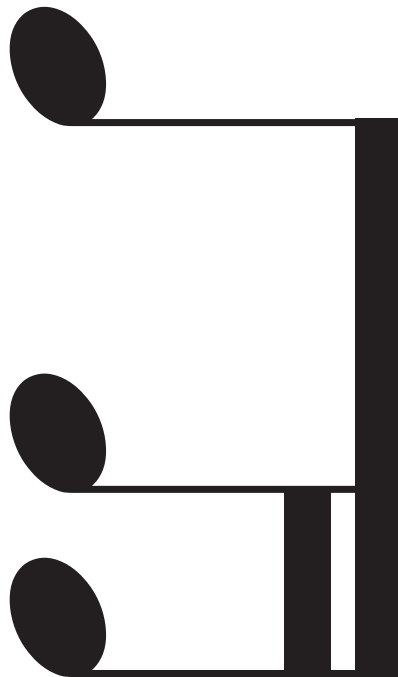
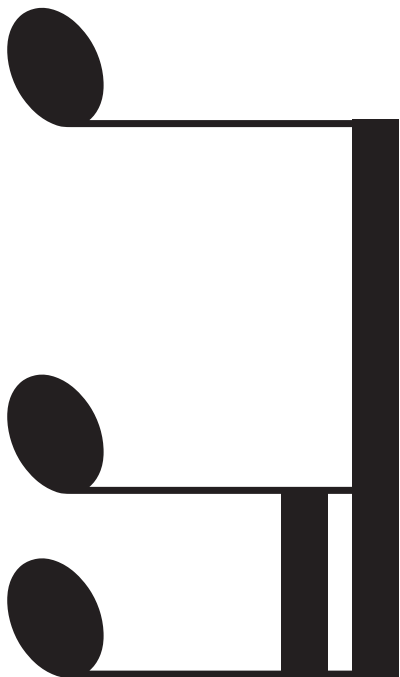
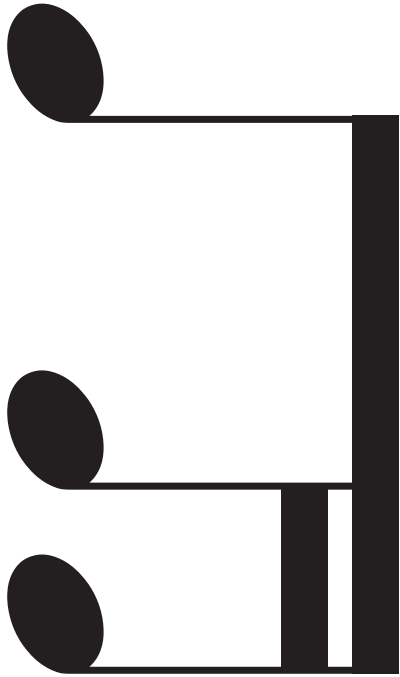
Quarter Rests

Card dimensions: 4.25 in. x 3.25 in.



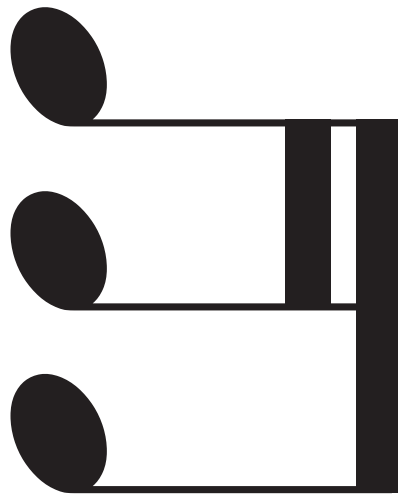
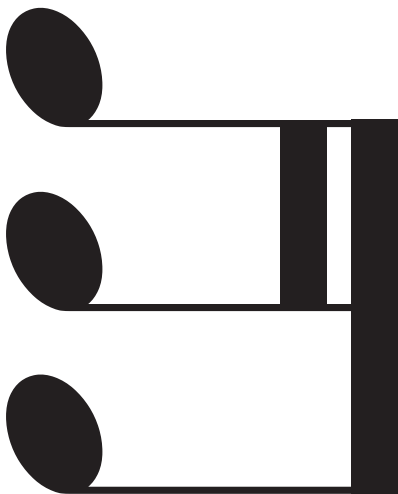
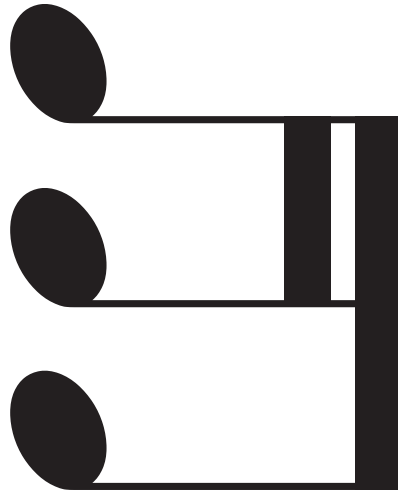
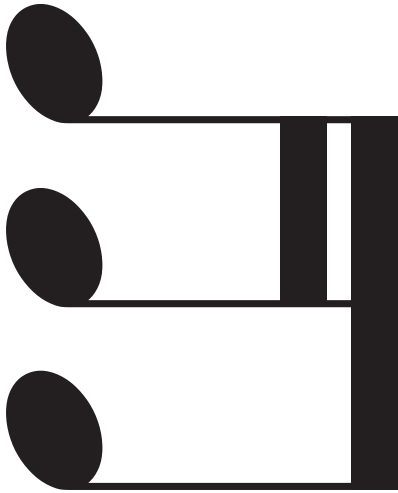
Ti-Tiki

Card dimensions: 4.25 in. x 3.25 in.



Tiki-Ti

Card dimensions: 4.25 in. x 3.25 in.



Two Sixteenth Note Pairs

Card dimensions: 2 1/8 in. x 4 1/4 in.

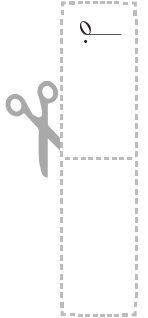


Whole Note

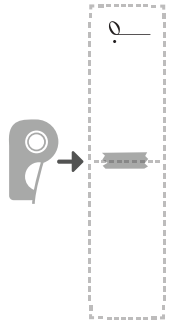
Card dimensions: 8.5 in. x 3.25 in.



1.

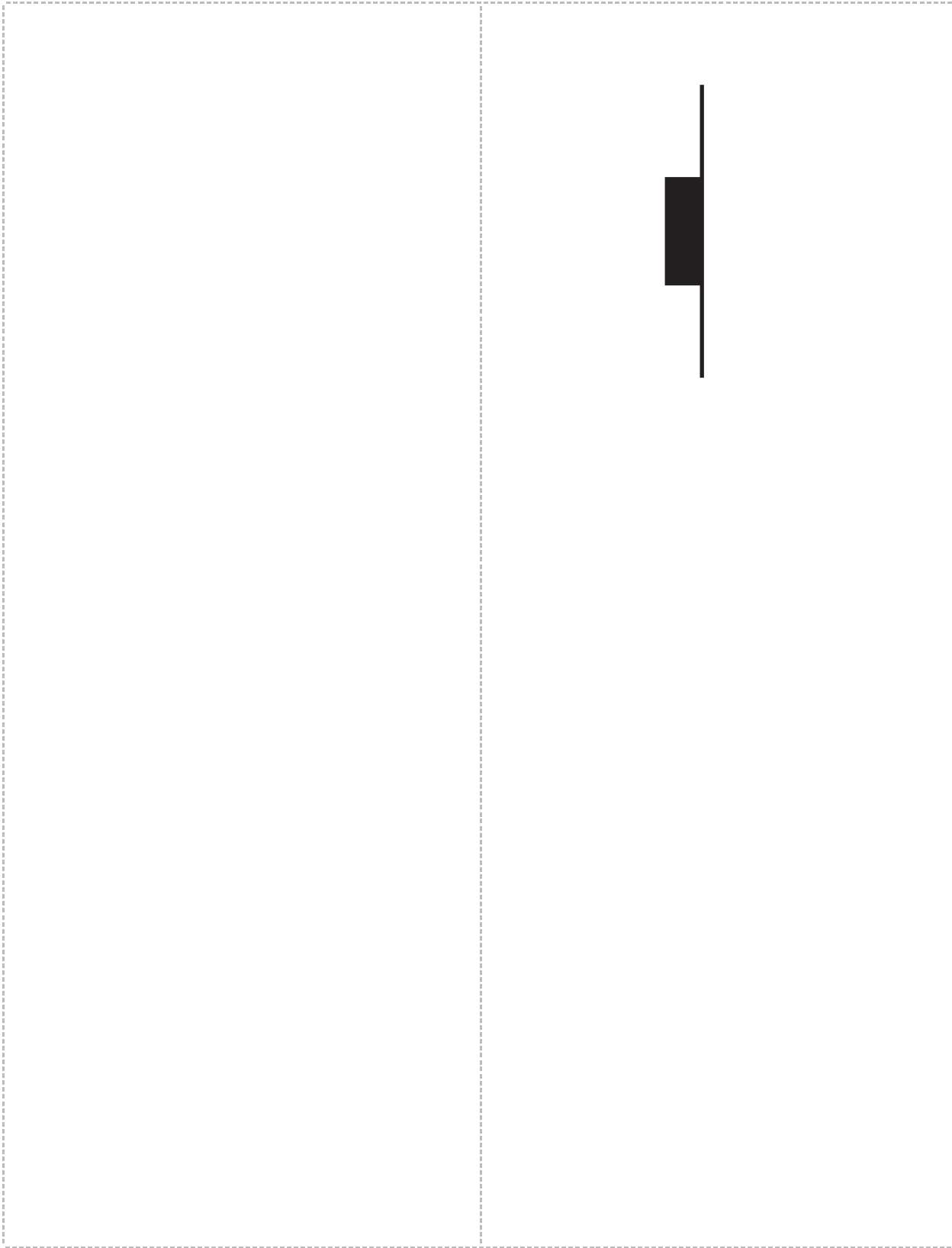


2.

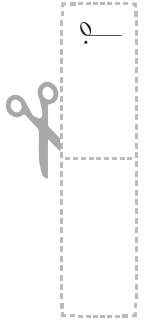


Whole Rest

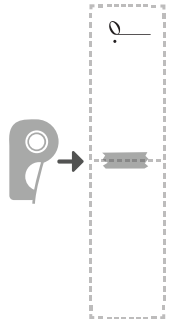
Card dimensions: 8.5 in. x 3.25 in.



1.



2.



Eighth Rest

Card dimensions: 2 1/8 in. x 4 1/4 in.

